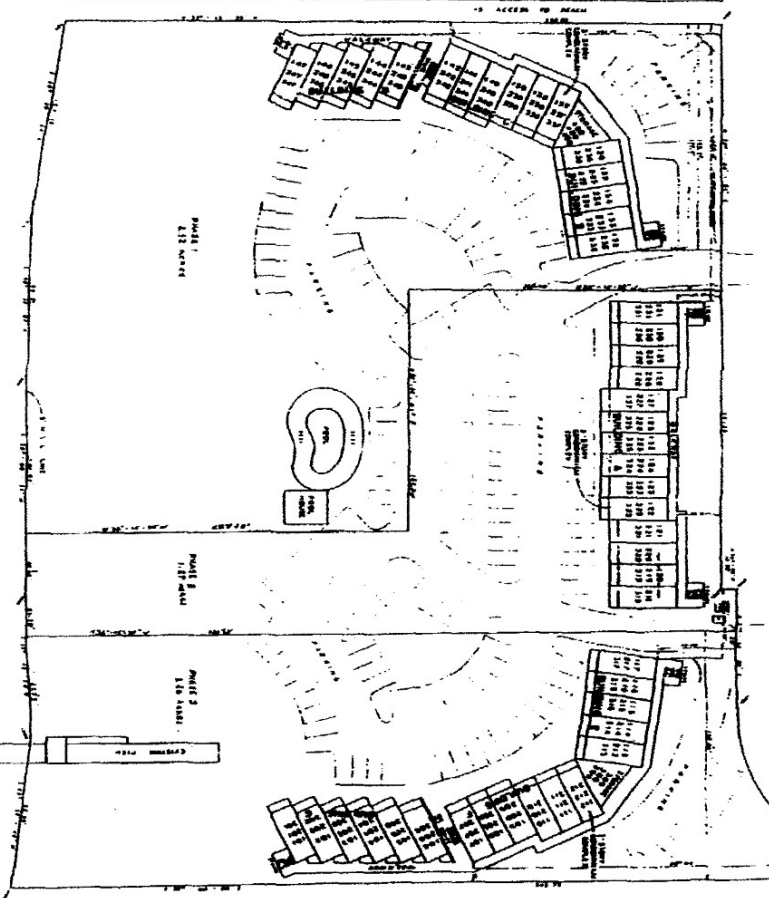


LOT 1 BLOCK 24  
SECTION 4

OCEAN BOULEVARD 00' R/W

180' R/W



- NOTICE
- RESIDENTS:
1. RESIDENTS USING CARP
  2. RESIDENTS USING SWIMMING POOL
  3. RESIDENTS USING GOLF COURSE
  4. RESIDENTS USING TENNIS COURTS
  5. RESIDENTS USING PLAYGROUND
- RESIDENTS:
1. RESIDENTS USING CARP
  2. RESIDENTS USING SWIMMING POOL
  3. RESIDENTS USING GOLF COURSE
  4. RESIDENTS USING TENNIS COURTS
  5. RESIDENTS USING PLAYGROUND

ATLANTIC OCEAN

# FLOYD, COLEMAN, ASKINS & KELLAHAN

SEA CABIN ON THE OCEAN III HORIZONTAL PROPERTY REGIME

SEA CABIN ISLE OF PALMS  
 SEA CABIN CORPORATION  
 ISLE OF PALMS, VA. SOUTH CAROLINA

THE BEACH COMPANY

SITE OF PALMS  
 CONSTRUCTION COMPANY  
 SOUTH CAROLINA

SEA CABIN CORPORATION  
 A CORPORATION REGISTERED UNDER THE  
 LAWS OF THE STATE OF SOUTH CAROLINA  
 10000 W. 10th St., Suite 100, Denver, CO 80202

*Exempt*

5-

NO.	DATE	DESCRIPTION
1	1/1/80	SEA CABIN ISLE OF PALMS
2	2/1/80	SEA CABIN ISLE OF PALMS
3	3/1/80	SEA CABIN ISLE OF PALMS
4	4/1/80	SEA CABIN ISLE OF PALMS
5	5/1/80	SEA CABIN ISLE OF PALMS